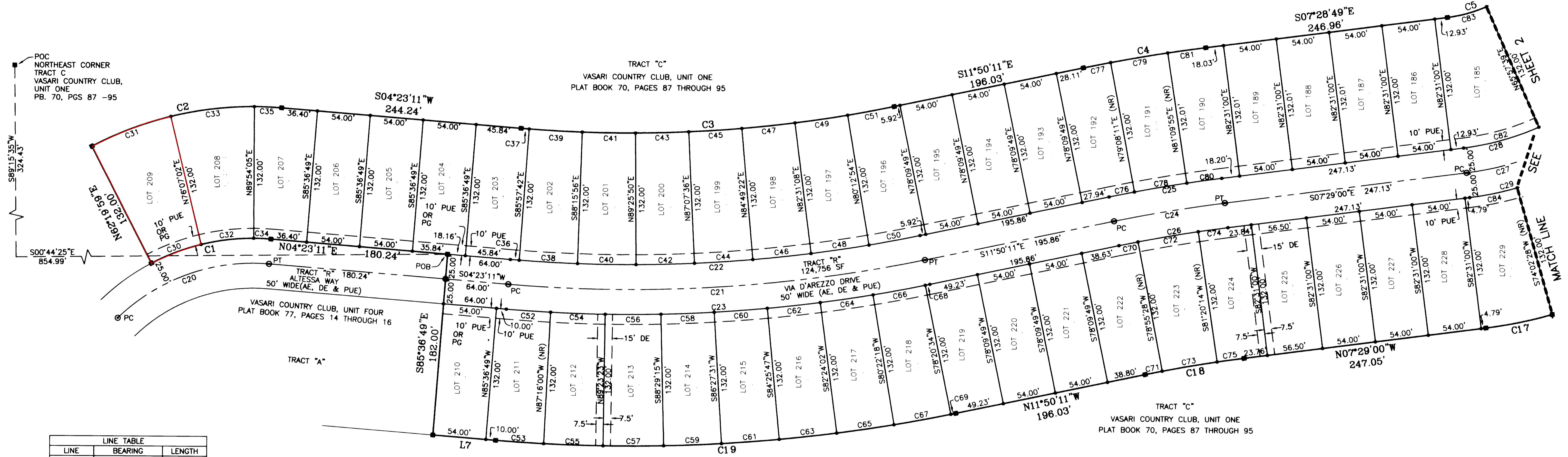


# VASARI COUNTRY CLUB, UNIT SIX

BEING A REPLAT OF PART OF TRACT C, VASARI COUNTRY CLUB, UNIT ONE  
(PLAT BOOK 70, PAGES 87 THROUGH 95)  
LYING IN SECTION 6, TOWNSHIP 48 SOUTH, RANGE 26 EAST  
CITY OF BONITA SPRINGS, LEE COUNTY, FLORIDA.



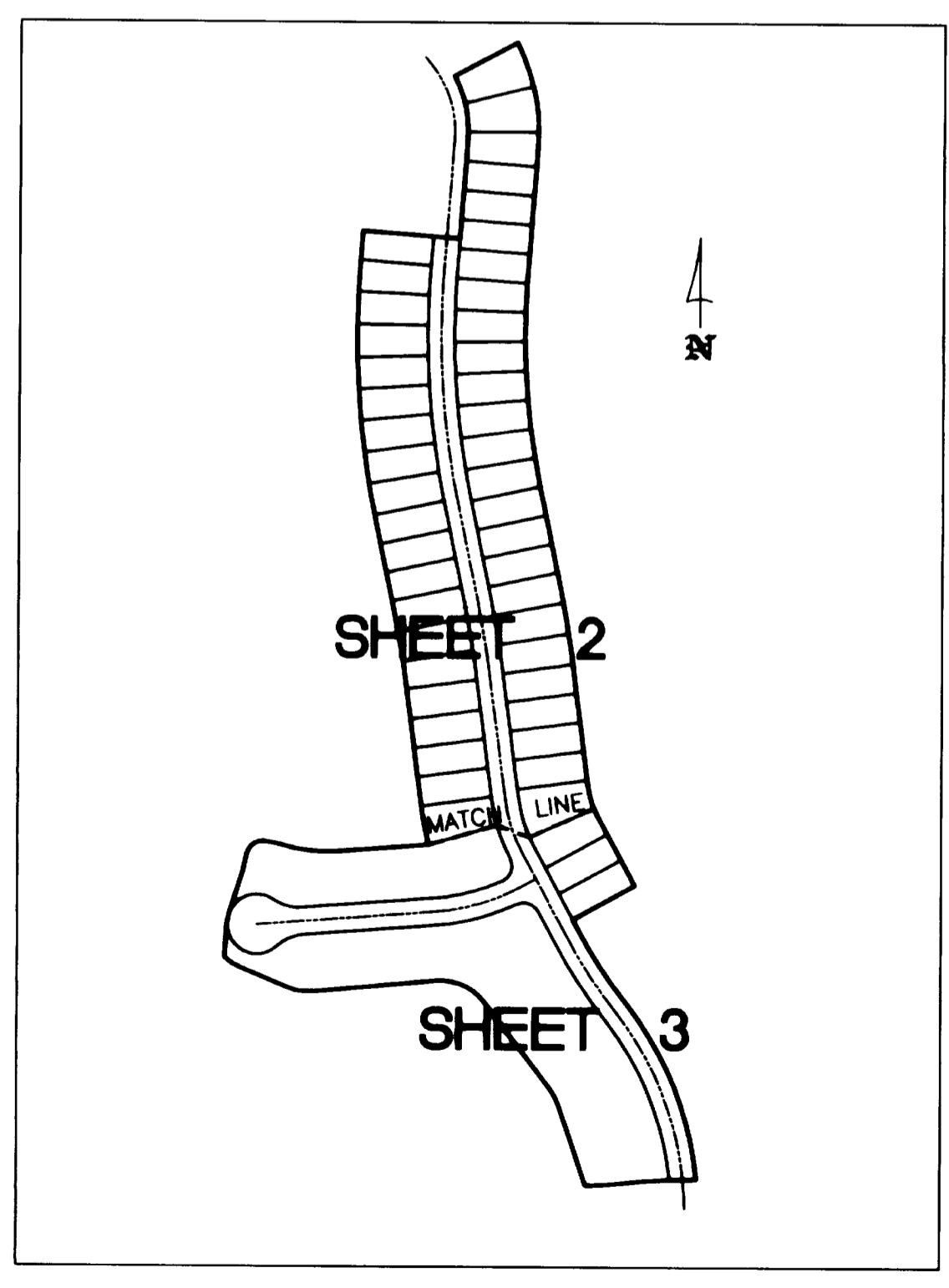
1542 CARSON STREET  
FORT MYERS, FLORIDA 33901  
(239) 278-5224 FAX: (239) 278-5419  
E-MAIL: WWW.CONSULT-RWA.COM  
FLORIDA CERTIFICATE OF AUTHORIZATION # 6852  
THIS INSTRUMENT PREPARED BY:  
DENNIS A. MILLER, P.S.M. NO. LS 5626



LINE	BEARING	LENGTH
L7	N04°23'11"E	64.00'

CURVE	LENGTH	RADIUS	DELTA	CHORD	CHORD BRG.
C1	125.87'	225.00'	32°03'12"	124.24'	N11°38'25"W
C2	199.72'	357.00'	32°03'12"	197.13'	N11°38'25"W
C3	380.26'	1343.00'	16°13'23"	378.99'	S03°43'30"E
C4	125.89'	1657.00'	4°21'12"	125.86'	N09°39'36"W
C5	52.51'	143.00'	21°02'20"	52.21'	S18°00'10"E
C17	88.80'	457.00'	8°37'31"	88.73'	S11°47'46"E
C18	101.94'	1334.17'	4°22'40"	101.92'	N09°39'17"W
C19	469.17'	1657.00'	16°13'23"	467.60'	S03°43'30"E
C20	168.28'	200.00'	48°12'33"	163.36'	N19°43'05"W
C21	424.72'	1500.00'	16°13'23"	423.30'	S03°43'30"E
C22	417.64'	1475.00'	16°13'23"	416.24'	S03°43'30"E
C23	431.79'	1525.00'	16°13'23"	430.35'	S03°43'30"E
C24	113.96'	1500.00'	4°21'11"	113.94'	N09°39'36"W
C25	115.86'	1525.00'	4°21'11"	115.84'	N09°39'36"W
C26	112.07'	1475.00'	4°21'11"	112.04'	N09°39'36"W
C27	110.16'	300.00'	21°02'20"	109.54'	S18°00'10"E
C28	100.98'	275.00'	21°02'20"	100.41'	S18°00'10"E
C29	115.53'	325.00'	20°22'05"	114.93'	S17°40'02"E
C30	54.13'	225.00'	13°47'03"	54.00'	N20°46'30"W
C31	85.89'	357.00'	13°47'03"	85.68'	N20°46'30"W
C32	54.13'	225.00'	13°47'03"	54.00'	N06°59'27"W
C33	85.89'	357.00'	13°47'03"	85.68'	N06°59'27"W
C34	17.61'	225.00'	4°29'06"	17.61'	N02°08'38"E
C35	27.95'	357.00'	4°29'06"	27.94'	N02°08'38"E
C36	8.96'	1475.00'	0°20'53"	8.96'	S04°12'45"W
C37	8.16'	1343.00'	0°20'53"	8.16'	S04°12'45"W
C38	59.31'	1475.00'	2°18'14"	59.31'	S02°53'11"W
C39	54.00'	1343.00'	2°18'14"	54.00'	S02°53'11"W
C40	59.31'	1475.00'	2°18'14"	59.31'	S00°34'57"W
C41	54.00'	1343.00'	2°18'14"	54.00'	S00°34'57"W
C42	59.31'	1475.00'	2°18'14"	59.31'	S01°43'17"E
C43	54.00'	1343.00'	2°18'14"	54.00'	S01°43'17"E
C44	59.31'	1475.00'	2°18'14"	59.31'	S04°01'31"E
C45	54.00'	1343.00'	2°18'14"	54.00'	S04°01'31"E
C46	59.31'	1475.00'	2°18'14"	59.31'	S06°19'45"E
C47	54.00'	1343.00'	2°18'14"	54.00'	S06°19'45"E
C48	59.31'	1475.00'	2°18'14"	59.31'	S08°37'59"E

CURVE	LENGTH	RADIUS	DELTA	CHORD	CHORD BRG.
C49	54.00'	1343.00'	2°18'14"	54.00'	S08°37'59"E
C50	52.81'	1475.00'	2°03'05"	52.81'	S10°48'39"E
C51	48.08'	1343.00'	2°03'05"	48.08'	S10°48'39"E
C52	45.00'	1525.00'	1°41'27"	45.00'	S03°32'28"W
C53	48.81'	1657.00'	1°41'16"	48.81'	S03°32'33"W
C54	55.50'	1525.00'	2°05'07"	55.50'	S01°39'11"W
C55	60.39'	1657.00'	2°05'18"	60.39'	S01°39'16"W
C56	56.50'	1525.00'	2°07'22"	56.50'	S00°27'04"E
C57	61.39'	1657.00'	2°07'22"	61.39'	S00°27'04"E
C58	54.00'	1525.00'	2°01'44"	54.00'	S02°31'37"E
C59	58.68'	1657.00'	2°01'44"	58.67'	S02°31'37"E
C60	54.00'	1525.00'	2°01'44"	54.00'	S04°33'21"E
C61	58.68'	1657.00'	2°01'44"	58.67'	S04°33'21"E
C62	54.00'	1525.00'	2°01'44"	54.00'	S08°35'06"E
C63	58.68'	1657.00'	2°01'44"	58.67'	S08°35'06"E
C64	54.00'	1525.00'	2°01'44"	54.00'	S08°36'50"E
C65	58.68'	1657.00'	2°01'44"	58.67'	S08°36'50"E
C66	54.00'	1525.00'	2°01'44"	54.00'	S10°38'34"E
C67	58.68'	1657.00'	2°01'44"	58.67'	S10°38'34"E
C68	4.77'	1525.00'	0°10'45"	4.77'	S11°44'49"E
C69	5.18'	1657.00'	0°10'45"	5.18'	S11°44'49"E
C70	19.62'	1475.00'	0°45'44"	19.62'	N11°27'19"W
C71	17.70'	1334.17'	0°45'36"	17.70'	N11°27'49"W
C72	62.06'	1475.00'	2°24'39"	62.06'	N09°52'08"W
C73	56.50'	1334.17'	2°25'36"	56.50'	N09°52'13"W
C74	30.38'	1475.00'	1°10'48"	30.38'	N08°04'24"W
C75	27.74'	1334.17'	1°11'28"	27.74'	N08°03'41"W
C76	26.06'	1525.00'	0°58'45"	26.06'	N11°20'49"W
C77	28.13'	1657.00'	0°58'22"	28.13'	N11°21'00"W
C78	54.00'	1525.00'	2°01'44"	54.00'	N09°50'34"W
C79	58.68'	1657.00'	2°01'44"	58.67'	N09°50'57"W
C80	35.80'	1525.00'	1°20'42"	35.80'	N08°09'21"W
C81	39.08'	1657.00'	1°21'05"	39.08'	N08°09'33"W
C82	79.46'	275.00'	16°33'21"	79.19'	S15°45'40"E
C83	41.32'	143.00'	16°33'21"	41.18'	S15°45'40"E
C84	49.27'	325.00'	8°41'10"	49.22'	S11°49'35"E



KEY MAP  
NOT TO SCALE

- ABBREVIATIONS:
- |      |                              |     |                                 |
|------|------------------------------|-----|---------------------------------|
| PC   | POINT OF CURVATURE           | PUE | PUBLIC UTILITY EASEMENT         |
| PRC  | POINT OF REVERSE CURVATURE   | AE  | ACCESS EASEMENT                 |
| PT   | POINT OF TANGENCY            | DE  | DRAINAGE EASEMENT               |
| PI   | POINT OF INTERSECTION        | POB | POINT OF BEGINNING              |
| PCC  | POINT OF COMPOUND CURVATURE  | POC | POINT OF COMMENCEMENT           |
| PRM  | PERMANENT REFERENCE MONUMENT | NR  | NON-RADIAL                      |
| PCP  | PERMANENT CONTROL POINT      | FND | FOUND                           |
| O.R. | OFFICIAL RECORDS BOOK        | CM  | CONCRETE MONUMENT               |
| PS   | PAGE(S)                      | L1  | LINE NUMBER 1, SEE LINE TABLE   |
| SF   | SQUARE FEET                  | C1  | CURVE NUMBER 1, SEE CURVE TABLE |

- GENERAL NOTES:
- ALL DIMENSIONS ARE IN FEET AND DECIMALS THEREOF.
- BEARINGS ARE BASED ON THE NORTH LINE OF THE SOUTHEAST QUARTER (SE1/4) OF THE NORTHWEST QUARTER (NW1/4), SECTION 6, TOWNSHIP 48 SOUTH, RANGE 26 EAST, LEE COUNTY, FLORIDA AS HAVING AN ASSUMED BEARING OF N.89°15'35"E.
- ALL LOT LINES ARE RADIAL UNLESS NOTED OTHERWISE.
- ALL P.R.M.'S AND P.C.P.'S MEET THE MINIMUM STANDARDS DEFINED IN CHAPTER 177, PART 1 OF THE FLORIDA STATUTES AT THE DATE OF PLATING.
- ALL CURVES ARE CIRCULAR CURVES AND ARE TANGENTIAL UNLESS NOTED OTHERWISE
- LEGEND:
- INDICATES PERMANENT REFERENCE MONUMENT (PRM) 4"x4" CONCRETE MONUMENT STAMPED PRM LB 6952
  - ⊙ INDICATES PERMANENT CONTROL POINT (PCP) PARKER KALON NAIL AND DISC STAMPED PRM LB 6952
  - INDICATES 5/8" IRON PIN STAMPED RWA LB 6952